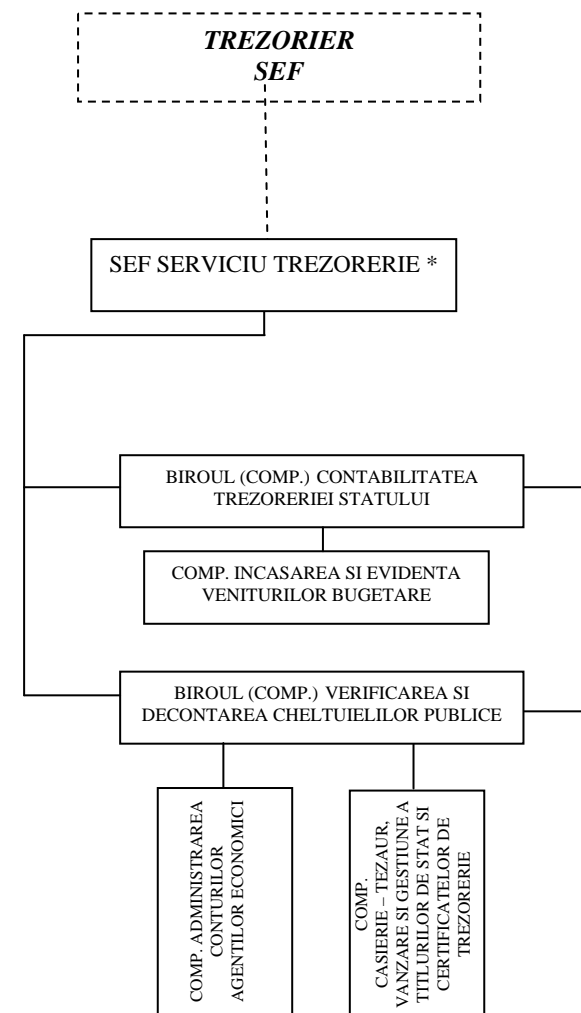
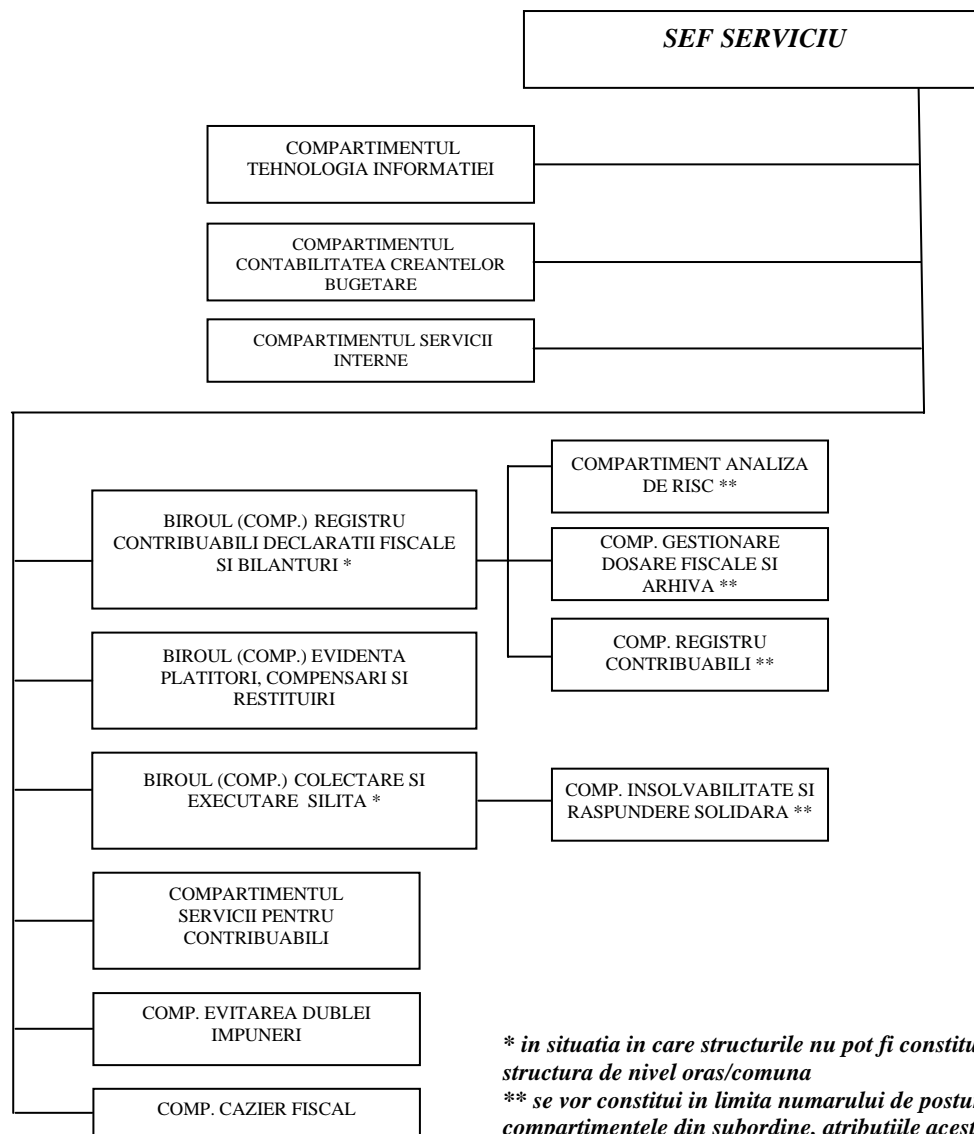


**SERVICIUL FISCAL MUNICIPAL.....**  
(se organizeaza si functioneaza la nivelul municipiilor neresedinta de judet)



*Nota: in situatia in care nu pot fi constituite birouri/compartimente (cu exceptia activitatii de trezorerie), datorita numarului insuficient de posturi, atributiile acestora vor fi preluate de alte structuri din acelasi domeniu*